

Test Report

No. SH8084464-1/CHEM

Date: Jun. 19, 2008

Page 1 of 5

YUEQING CITY PRECISION SHAFT CO., LTD
LUZHAI INDUSTRIAL ZONE, HONGQIAO TOWN, YUEQING CITY, ZHEJIANG PROVINCE

THIS REPORT IS TO SUPERSEDE TEST REPORT NO.SH8084464/CHEM DATE: 2008/06/17

The following sample(s) was/were submitted and identified by/on behalf of the client as:

Sample Name : SHAFT
SGS Ref No. : 11083084-2
Material : SUS420J₂
Supplier : CHANGZHOU KAIXING MEDICAL STAINLESS STEEL CO.,

Sample Receiving Date : Jun.13, 2008
Testing Period : Jun.13 – 17, 2008

Test Requested : In accordance with the RoHS Directive 2002/95/EC, and its amendment directives.

Test Method : With reference to IEC 62321/2nd CDV (111/95/CDV)
Procedures for the Determination of Levels of Regulated Substances in
Electrotechnical Products
(1) Determination of Cadmium by ICP and AAS.
(2) Determination of Lead by ICP and AAS.
(3) Determination of Mercury by ICP.
(4) Determination of Hexavalent Chromium by Spot test / Colorimetric Method.
Analysis was performed by UV-Vis Spectrophotometer
(5) Determination of PBBs and PBDEs by GC/MS.

Test Results : Please refer to next pages

Conclusion : Based on the performed tests on submitted samples, the results comply with the
RoHS Directive 2002/95/EC and its subsequent amendments.

Signed for and on behalf of
SGS-CSTC Chemical Laboratory



Ella Zhang
Section Manager

Signed for and on behalf of
SGS-CSTC Chemical Laboratory



Sandy Hao
Lab Manager

Test Report

No. SH8084464-1/CHEM

Date: Jun. 19, 2008

Page 2 of 5

Test results by chemical method (Unit: mg/kg)

Test Item(s):	Method (refer to)	1	MDL	RoHS Limit
Cadmium(Cd)	(1)	ND	2	100
Lead (Pb)	(2)	ND	2	1000
Mercury (Hg)	(3)	ND	2	1000
Hexavalent Chromium (CrVI) by spot test / boiling-water extraction	(4)	Negative	See Note (5)	#
Sum of PBBs	(5)	ND	-	1000
Monobromobiphenyl		ND	5	-
Dibromobiphenyl		ND	5	-
Tribromobiphenyl		ND	5	-
Tetrabromobiphenyl		ND	5	-
Pentabromobiphenyl		ND	5	-
Hexabromobiphenyl		ND	5	-
Heptabromobiphenyl		ND	5	-
Octabromobiphenyl		ND	5	-
Nonabromobiphenyl		ND	5	-
Decabromobiphenyl		ND	5	-
Sum of PBDEs (Note 4)		ND	-	1000
Monobromodiphenyl ether		ND	5	-
Dibromodiphenyl ether		ND	5	-
Tribromodiphenyl ether		ND	5	-
Tetrabromodiphenyl ether		ND	5	-
Pentabromodiphenyl ether		ND	5	-
Hexabromodiphenyl ether		ND	5	-
Heptabromodiphenyl ether		ND	5	-
Octabromodiphenyl ether		ND	5	-
Nonabromodiphenyl ether	ND	5	-	
Decabromodiphenyl ether	ND	5	-	
Sum of PBDEs (Mono to Deca)	ND	-	-	

Test Part Description:

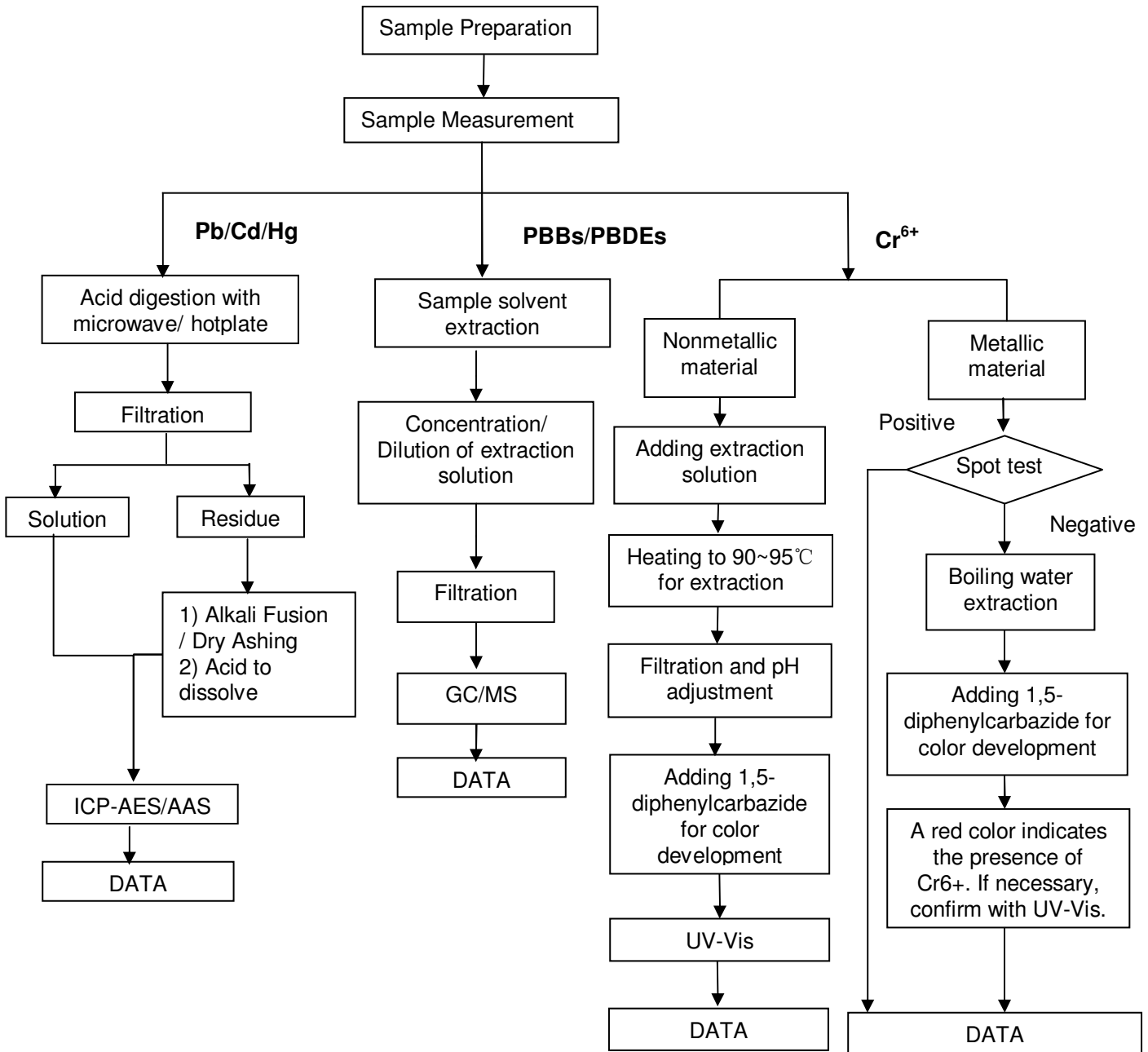
1. Silvery-grey metal shaft

Note:

- (1) mg/kg = ppm
- (2) ND = Not Detected
- (3) MDL = Method Detection Limit
- (4) Sum of Mono to NonaBDE & according to 2005/717/EC DecaBDE is exempt.
- (5) Spot-test:
 - Negative = Absence of CrVI coating, Positive = Presence of CrVI coating;
 - (The tested sample should be further verified by boiling-water-extraction method if the spot test result is Negative or cannot be confirmed.)
 - Boiling-water-extraction:
 - Negative = Absence of CrVI coating
 - Positive = Presence of CrVI coating; the detected concentration in boiling-water-extraction solution is equal or greater than 0.02 mg/kg with 50 cm² sample surface area.
- (6) # = Positive indicates the presence of Hexavalent Chromium on the tested areas.
Negative indicates the absence of CrVI on the tested areas.
- (7) "-" = Not Regulated
- (8) The maximum permissible limit is quoted from the document 2005/618/EC amending RoHS directive 2002/95/EC

ATTACHMENTS

- 1) Name of the person who made measurement: Cathy Cai/George Xu/Diane Wang
- 2) Name of the person in charge of measurement: Terry Wang/Tracy Yue



Sample photo:



SGS authenticate the photo on original report only

*** End of Report ***