



## Test Report

No.: GZ0802024616/CHEM

Date: FEB 28, 2008

Page 1 of 4

HEIWA SANGYO CO., LTD  
4-21-11 BUZO, URAWA-SHI, SAITAMA 336-0025

The following sample(s) was/were submitted and identified on behalf of the applicant as No.1-H

SGS Ref No. : GZ10862060EC-9.8  
Supplier : HEIWA SANGYO CO., LTD  
Sample Receiving Date : FEB 22, 2008  
Testing Period : FEB 22, 2008 TO FEB 28, 2008

Test Requested : With reference to SONY SS-00259  
To determine the Cadmium, Lead, Mercury & Hexavalent Chromium content in the submitted sample.

Test Method : HNO<sub>3</sub>/HCl/HF/Aqua Regia acid digestion.  
(1) Determination of Cadmium by ICP-OES.  
(2) Determination of Lead by ICP-OES&AAS.  
(3) Determination of Mercury by ICP-OES.  
  
With reference to EPA 3060A: 1996 & EPA 7196A: 1992.  
(4) Determination of Hexavalent Chromium by UV-Vis Spectrometry.

Test Results : Please refer to next page.

Signed for and on behalf of  
SGS-CSTC Ltd.

---

Huang Fang, Sunny  
Sr. Engineer



## Test Report

No.: GZ0802024616/CHEM

Date: FEB 28, 2008

Page 2 of 4

Test results by chemical method (Unit: mg/kg)

Test Item(s):	Method (refer to)	No.1	MDL
Cadmium(Cd)	(1)	N.D.	2
Lead (Pb)	(2)	127	2
Mercury (Hg)	(3)	N.D.	2
Hexavalent Chromium (CrVI) by alkaline extraction	(4)	N.D.	2

### Test Part Description:

No.1 Copper-colored powder

Note : 1. mg/kg = ppm

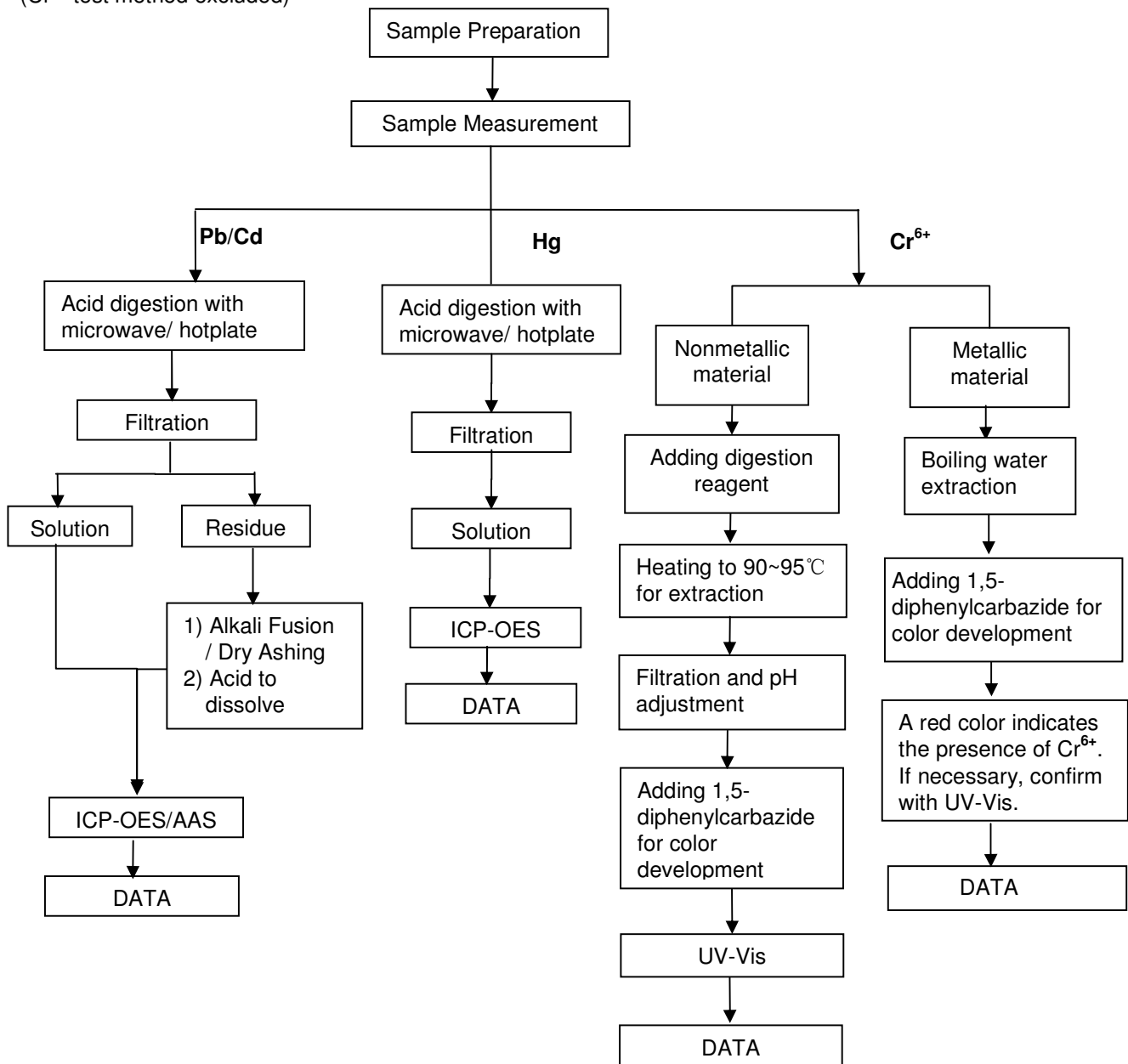
2. N.D. = Not Detected (< MDL)

3. MDL = Method Detection Limit

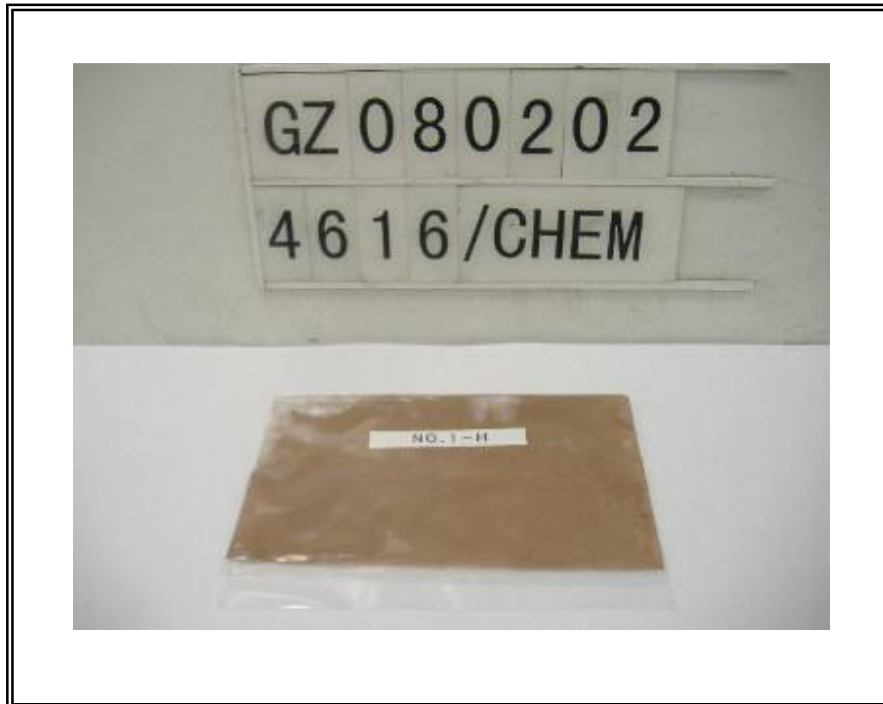
**ATTACHMENTS**

**Testing Flow Chart**

- 1) Name of the person who made measurement: David Shen
- 2) Name of the person in charge of measurement: Emily Feng
- 3) These samples were dissolved totally by pre-conditioning method according to below flow chart.  
(Cr<sup>6+</sup> test method excluded)



Sample photo :



SGS authenticate the photo on original report only

\*\*\* End of Report \*\*\*